

Solbox Statistics

Version 0.10 | Updated 2022/10 | Written by Solbox

Copyright

Copyright 2022 Solbox Inc. All rights reserved.

Since this document is the intellectual property of Solbox Co., Ltd., part or all of this document may not be reproduced, transmitted, distributed, or altered and used without the official permission of Solbox Co., Ltd. under any circumstances.

This document is provided for informational purposes only. Solbox Co., Ltd. has made every effort to verify the completeness and accuracy of the information contained in this document, but is not responsible for any errors or omissions that may occur. Therefore, the user is solely responsible for the use or results of the use of this document, and Solbox Co., Ltd. makes no warranty of any kind, either express or implied.

Certain software products referenced in this document, including the relevant URL information, are subject to, and not to comply with the applicable local and national laws of their respective owners. You are solely responsible for any consequences arising from this.

Solbox Co., Ltd. can change the contents of this document without notice.

1. Concept

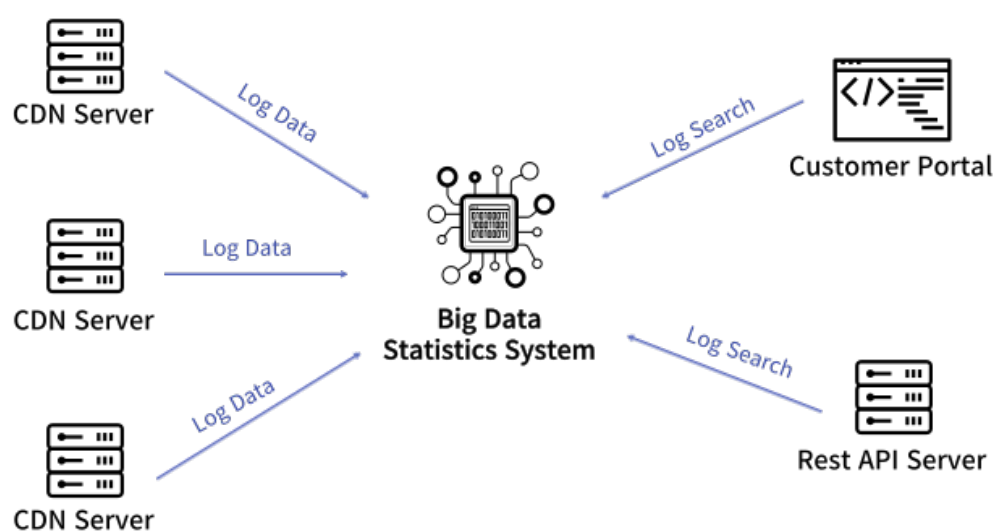
1.1. Solbox Statistics System

Solbox CDN service currently supports many forms of Internet service providers such as broadcasting, e-commerce, online education, online games, public institutions, and portals sites. In these various areas, real-time statistics and analysis services are essential for improving service quality and providing business insights through multidimensional analysis & statistics.

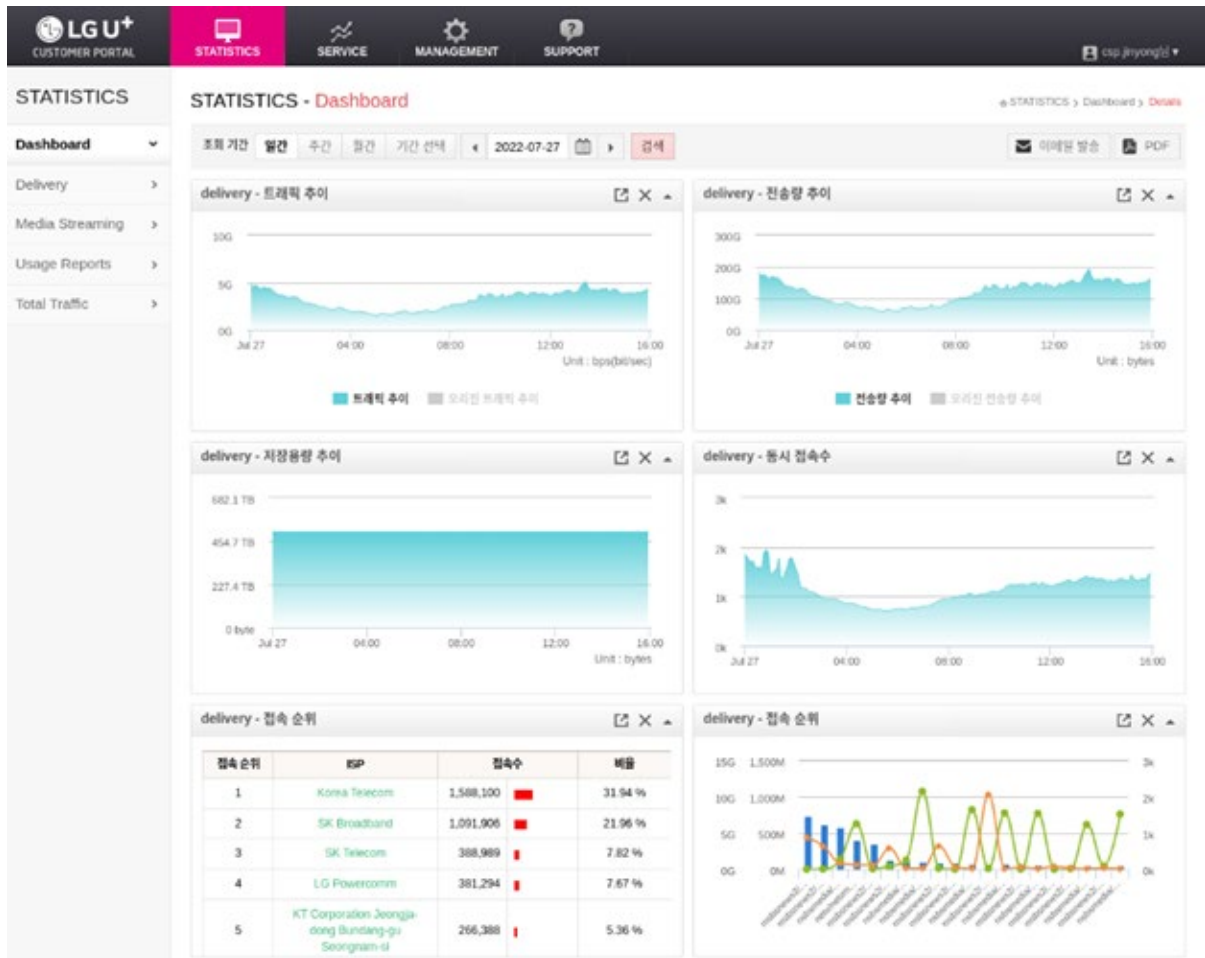
These days, huge amount of service traffic demands effective distributed system configuration, faster service expansion, real-time processing and reliability that can handle billions of user access statistics per day.

Solbox Statistics System provides real-time statistical information and analysis data for CDN services, providing effective system expansion with quality monitoring of media/content services, system performance and fault monitoring, and various access statistics analysis.

It consists of a distributed system architecture based on big data analytics to provide large user access, system log data processing, and various multidimensional analyses, providing fault tolerance and horizontal scale-out scalability through high-performance real-time analysis & statistics and automatic recovery.



1.2. Solbox Statistics Dashboard



2. Benefit

- Visualizes the statistical information to see the summary of data through the web portal (Provides Rest API)
- Improves the user service experience by checking the service status and quality through real-time statistics & analysis services
- Gets business insight for customer service through various multi-dimensional analysis & statistics
- Provides faster system expansion and stable analysis and statistics service in case of unexpected rapid traffic surge or service expansion

3. Key Features

- Provides search function by period (up to 1 year)
- Provides the up-to-date information compared to the previous day
- Checks the details of real-time traffic information
- Provides the information about the amount of data transfer in real time
- Provides the number of content requests in real time
- Provides the information about storage usage
- Provides the number of cache hit/miss requests
- Provides the information about cache hit/miss transmission
- Provides the number of simultaneous visitors
- Provides the number of requests by visitor location (ISP)
- Provides the amount of transmission by visitor location (ISP)
- Provide the transmission result (with response code) on the edge/origin server

- Provide access information by web browser and OS
- Provides authentication statistics for Wowza
- Provides daily top content URL information
- Provides daily top Referrer domain
- Provides daily top visitor information
- Saves data as Excel sheet and check data for all statistical information

4. Applications

- Solbox CDN service